

Southern Environmental Services, Inc

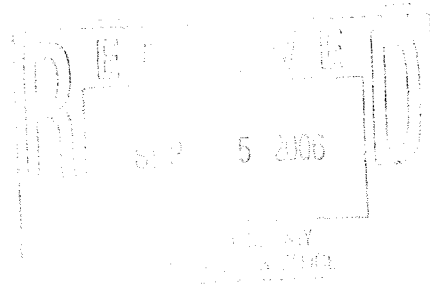
3547 Dreher Shoals Road, Suite 6

Irmo, SC 29063

Phone (803) 781-4545 / Fax (803) 407-3760

August 21, 2006

Newberry County of SC
Court House Annex
1309 College Street
Newberry, SC 29108
Attn: J.E. Klugh



RE: Newberry County Sheriff's Office Building
Equipment Rental and Building Monitoring

Dear Mr. Klugh;

July was the third month SOUTHERN ENVIRONMENTAL SERVICES, INC. was contracted for the monitoring and equipment rental necessary to maintain the Newberry County Sheriff's Office Building located at 3491 Main Street, Newberry, SC during the time the building is vacant.

During the month of July, the following occurred:

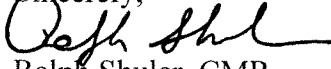
1. SESI visited the site each week to change the filters in the HEPA filtered equipment.
2. Our IH Technician visited the site during wet weather several times during the month with a thermal imaging camera to observe any moisture at the perimeter of the building. We documented a small water intrusion on the weekend of July 22-23rd in the exterior corner of the Directors office. (Reference attached photos) We installed additional blowers to quickly dry this area.
3. We have four "Temperature and Humidity Dataloggers" installed to constantly record the temperature and Relative Humidity. They are located as follows:
 - Sheriff's Office
 - Public Safety Area
 - Directors Office
 - Squad Room

The printouts of each Datalogger for July are attached for your records.

In summary, the facility is "status quote", with no additional water damage or fungal growth being detected.

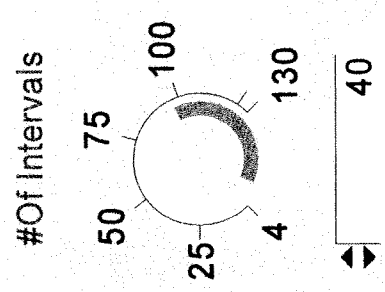
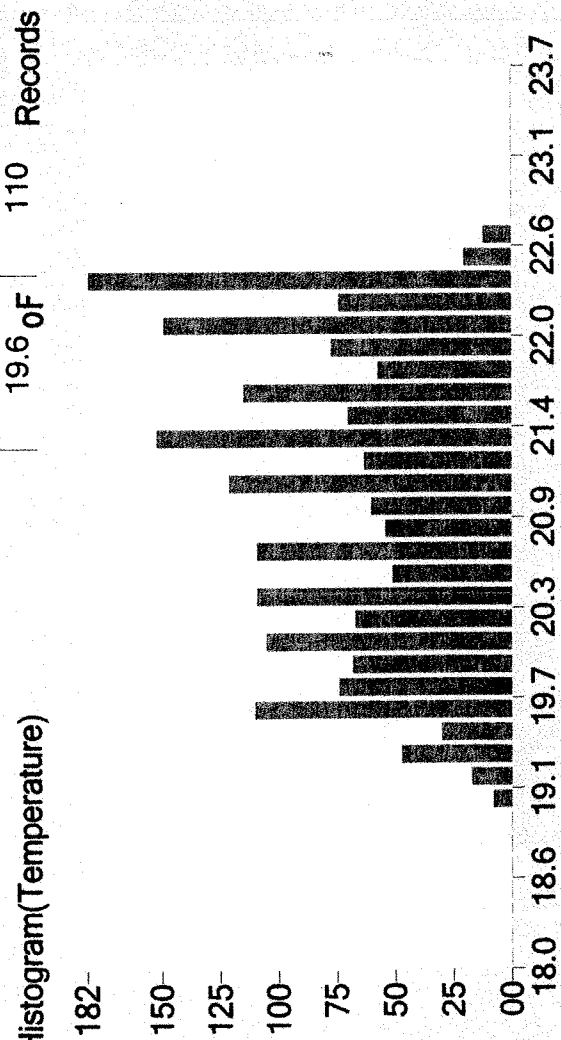
Thank you for allowing SESI the opportunity to be of service to you. Should you have any questions or comments, please do not hesitate to call us at (803) 781-4545.

Sincerely,

A handwritten signature in black ink, appearing to read "Ralph Shuler". The signature is fluid and cursive, with the first name "Ralph" being more prominent than the last name "Shuler".

Ralph Shuler, CMR
SC Division Manager
ralph.shuler@sesi.net
www.sesi.net

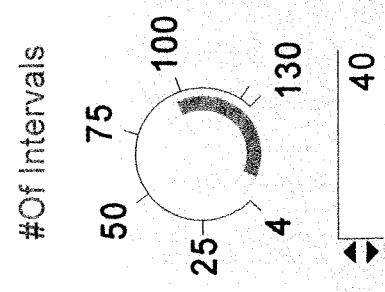
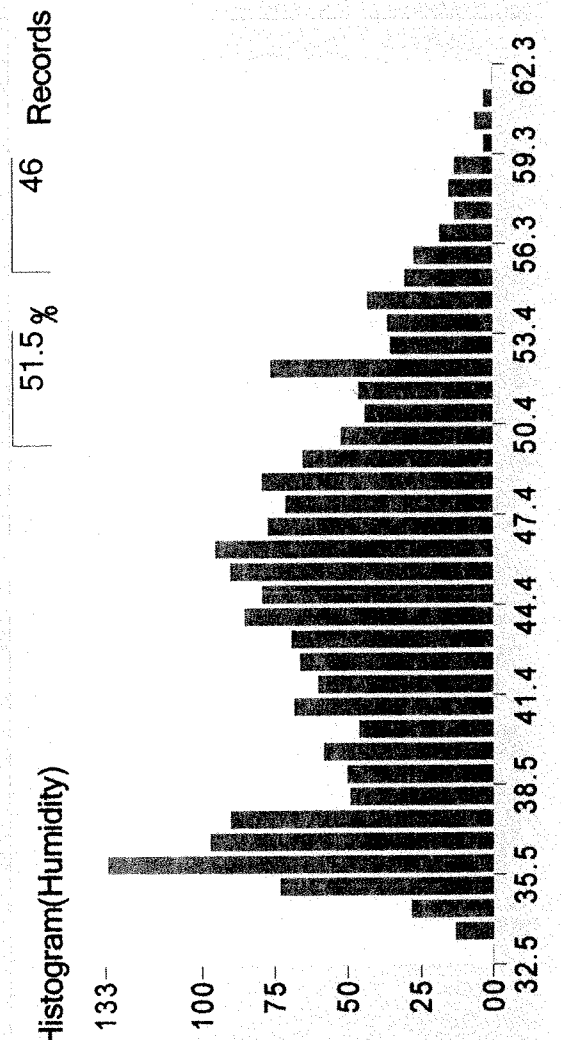
Temperature Histogram(Temperature)



Maximum	22.7
Minimum	19.0
Mean	21.0
Std.Dev	0.9

72.8°F
64.2°F
67.8°F

Humidity Histogram(Humidity)



Maximum	61.3
Minimum	33.5
Mean	44.5
Std.Dev	6.5



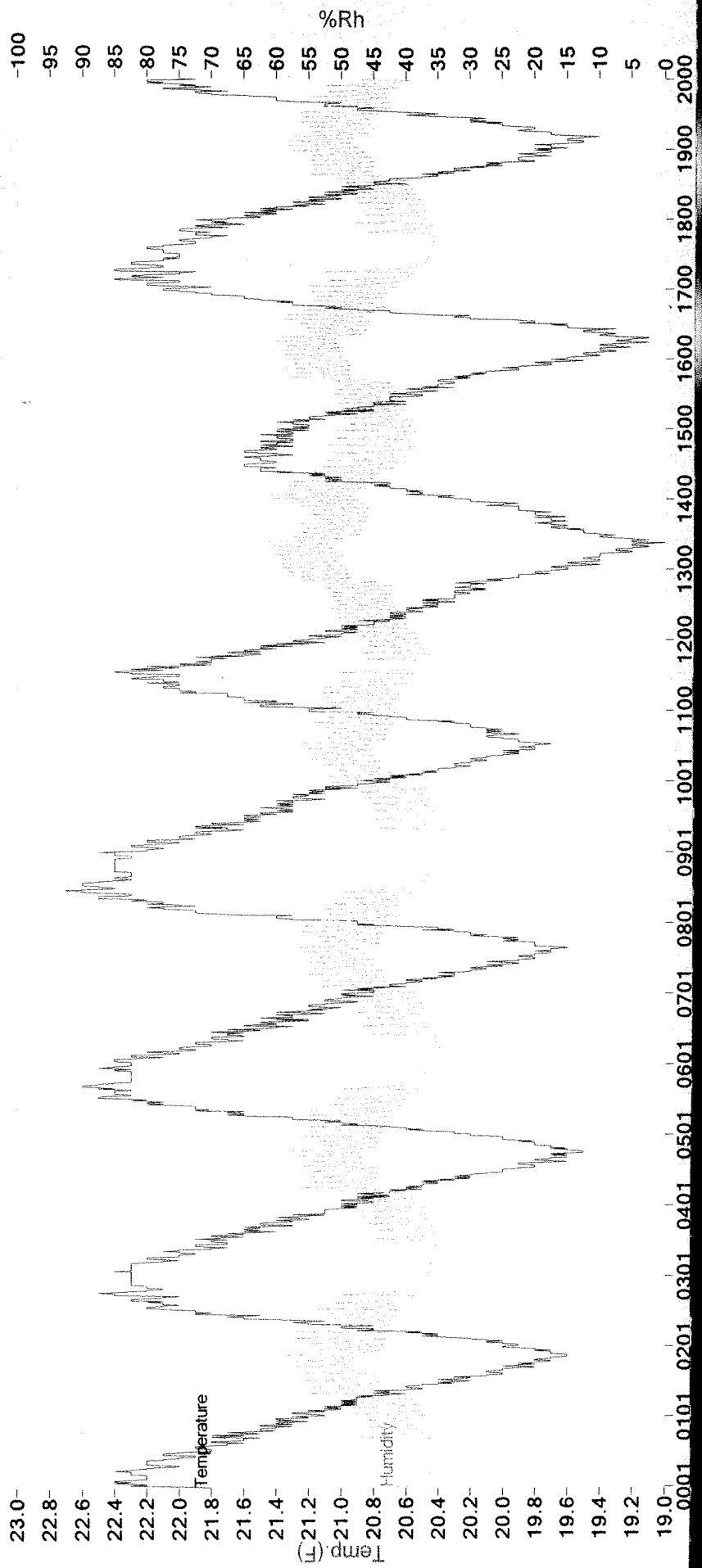
EXTTECH INSTRUMENTS

Temperature/Humidity Logger/Monitor

Retrieve File Save File Comm. Set Logger Set Data Table Statistics Print Graph Group-Files

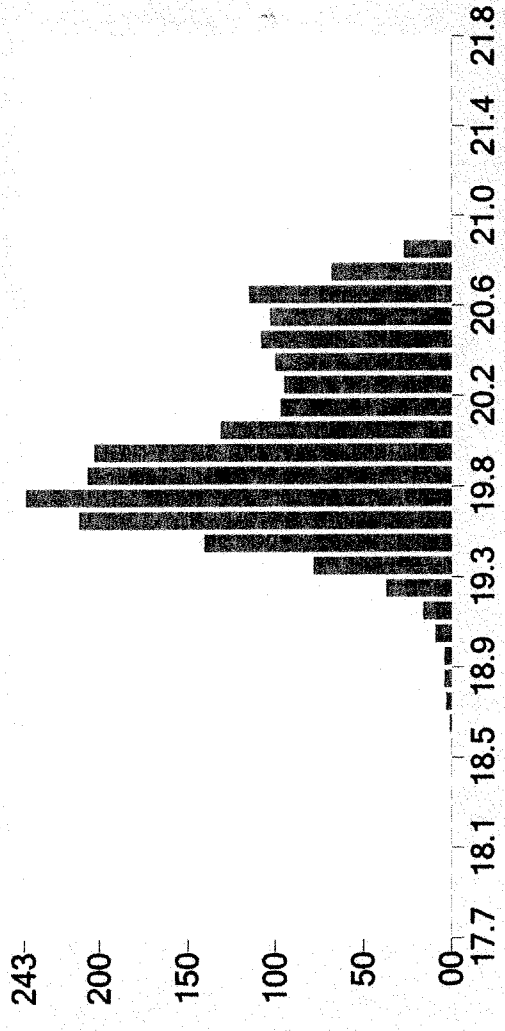
DATE 09-01-2006 TIME 11:07:37

PREVIOUS-SETTING ID= File name: c:\TRLog\Squad-July.txt

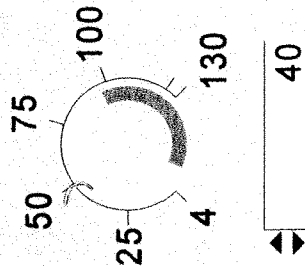


19.5 of 140 Records

Histogram(Temperature)



#Of Intervals



Maximum

20.8

69.4°F

Minimum

18.7

65.6°F

Mean

19.9

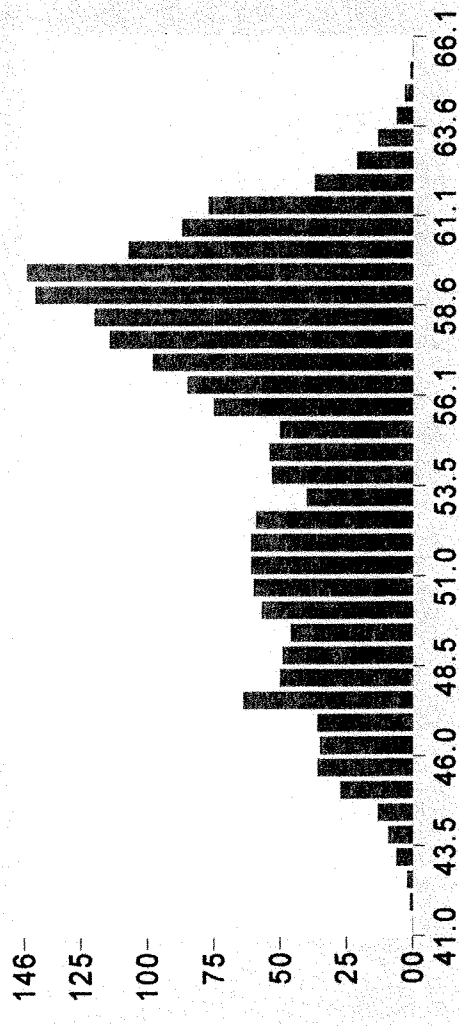
67.8°F

Std.Dev

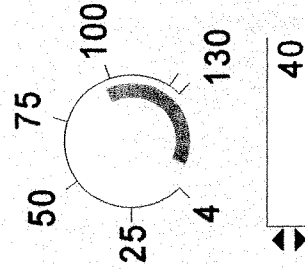
0.4

52.6 % 59 Records

Histogram(Humidity)



#Of Intervals



Maximum

65.1

Minimum

42.0

Mean

55.1

Std.Dev

5.0



EXTTECH INSTRUMENTS

Temperature/Humidity Logger Monitor

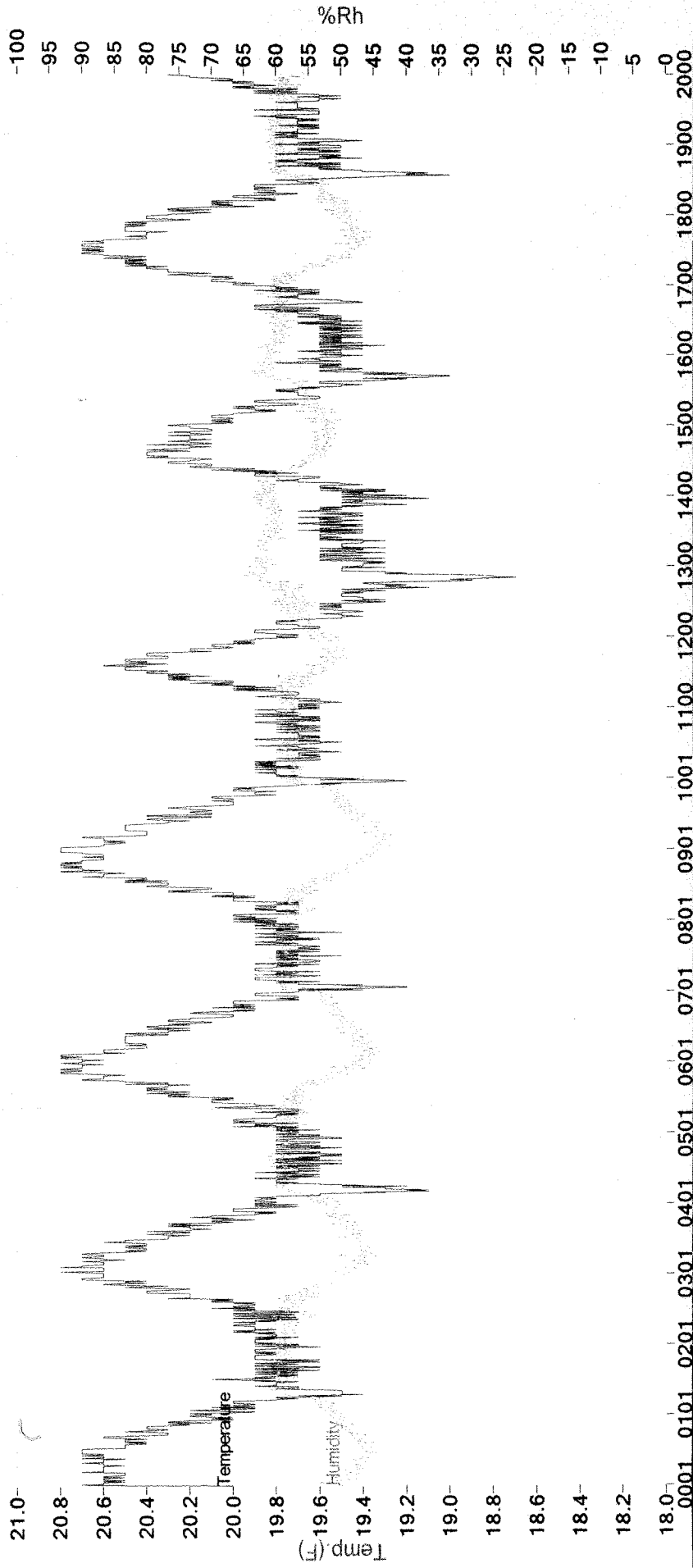
Retrieve File Save File Comm. Set Logger Set Data Table Statistics Print Graph Group-Files

📄 📁 📡 📁 📄 🖨️ 📄

DATE 09-01-2006 TIME 11:05:28

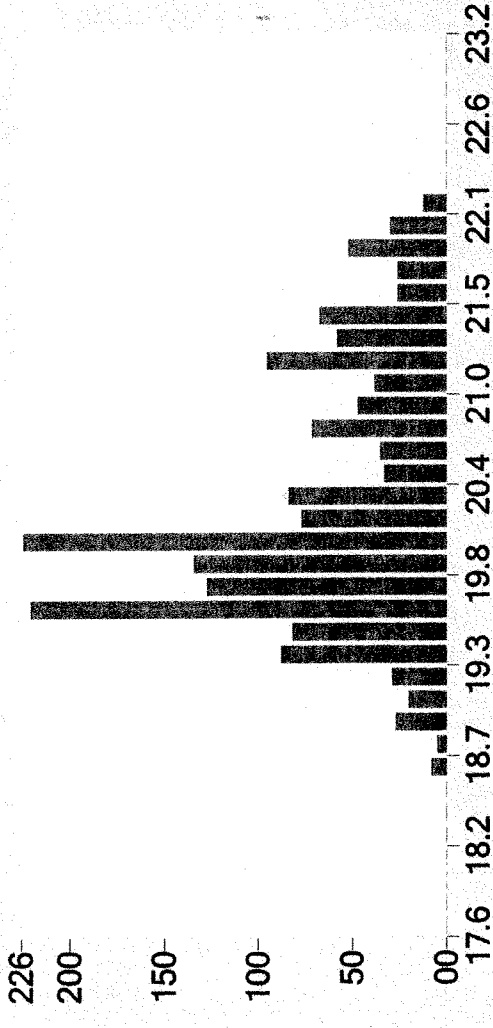
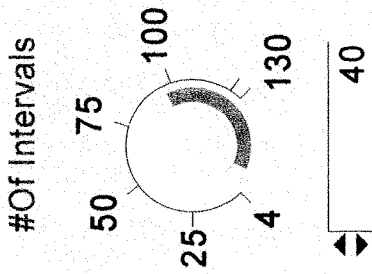
File name: c:\TRLog\Director-July.txt

PREVIOUS-SETTING ID=



Temperature Histogram(Temperature)

20.3 of 84 Records

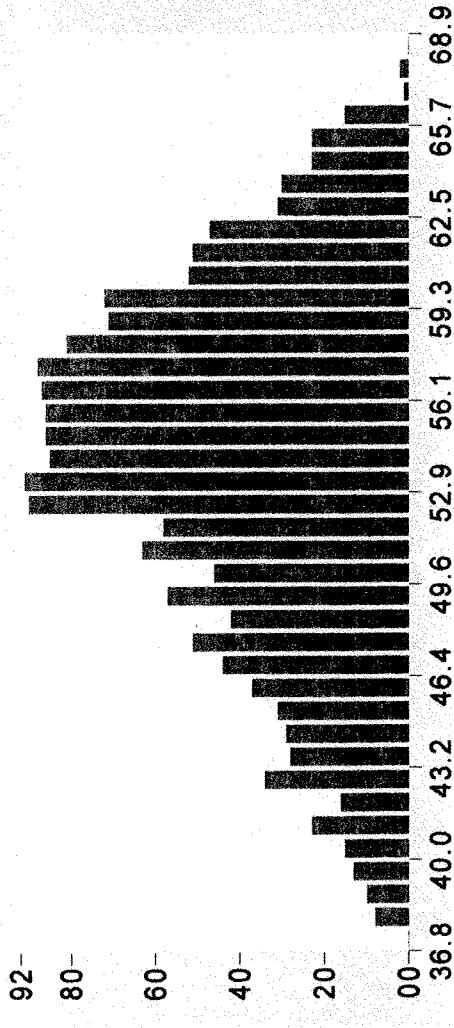
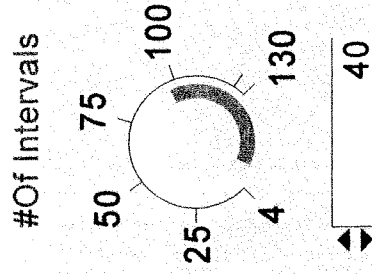


Maximum	22.2
Minimum	18.6
Mean	20.3
Std.Dev	0.8

71.9°F
65.4°F
68.5°F

Humidity Histogram(Humidity)

51.6% of 58 Records



Maximum	67.9
Minimum	37.8
Mean	53.8
Std.Dev	6.3



EXTTECH INSTRUMENTS

Retrieve File Save File Comm. Set Logger Set Data Table Statistics Print Graph Group-Files



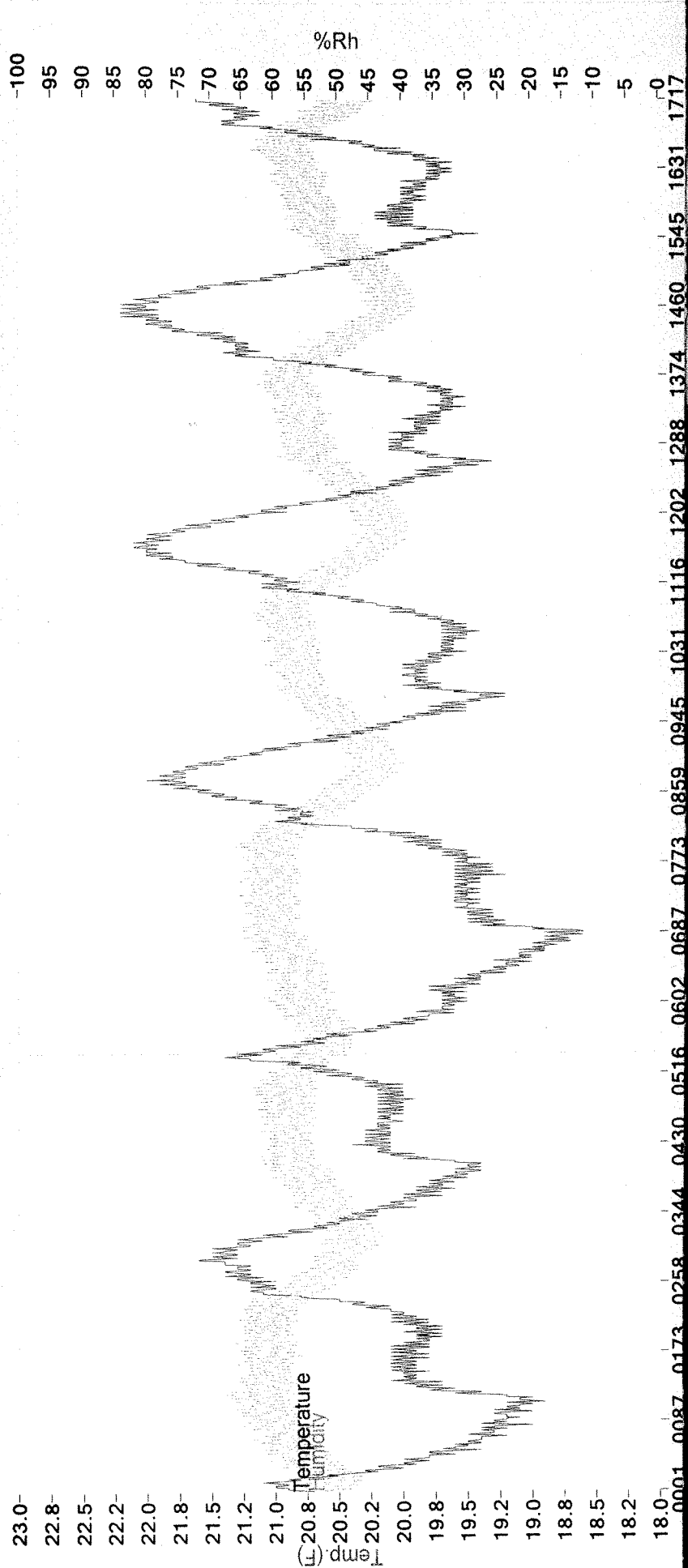






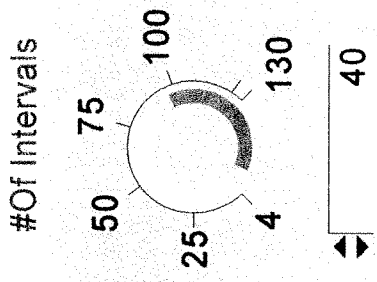
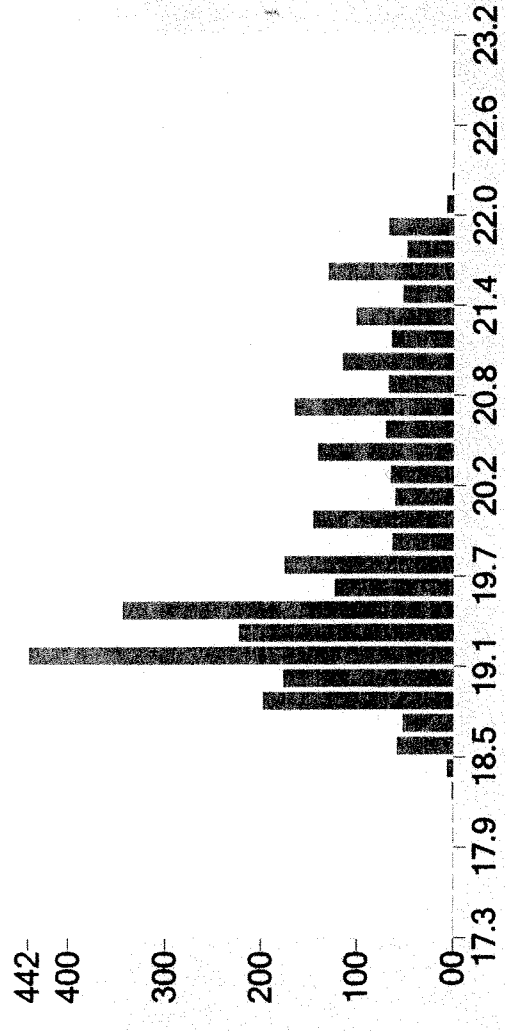

DATE 08-31-2006 TIME 18:01:49

PREVIOUS-SETTING ID= File name: c:\TRLog\Public Saftey - July.txt



Temperature Histogram(Temperature)

20.3 of 65 Records

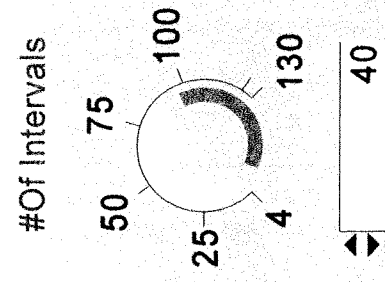
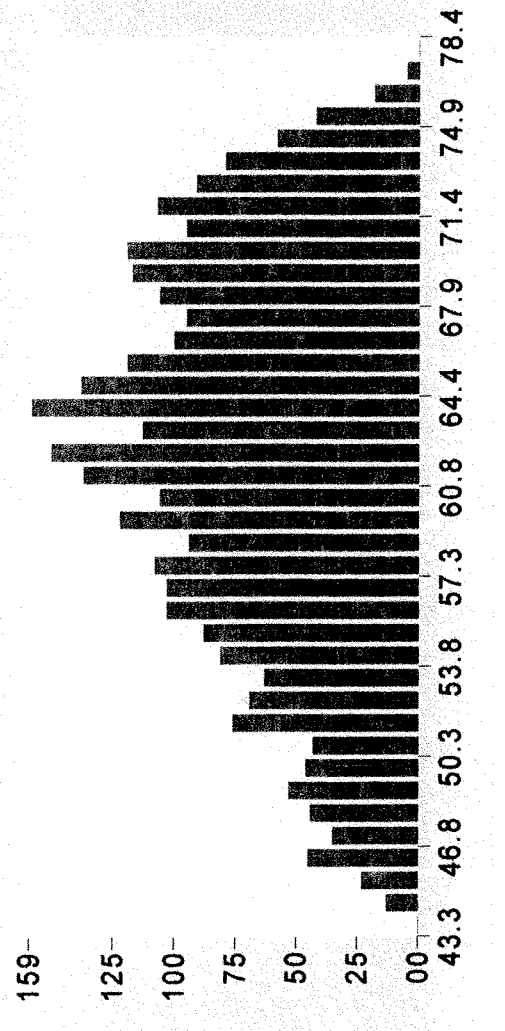


Maximum	22.2
Minimum	18.3
Mean	19.9
Std.Dev	0.9

71.9°F
64.9°F
67.8°F

Humidity Histogram(Humidity)

52.5 % 69 Records



Maximum	77.4
Minimum	44.3
Mean	62.1
Std.Dev	7.6



EXTTECH INSTRUMENTS

Temperature/Humidity Logger Monitor

Retrieve File Save File Comm. Set Logger Set Data Table Statistics Print Graph Group-Files

DATE 09-01-2006 TIME 11:00:36

File name: a:\Sheriff-July.txt

