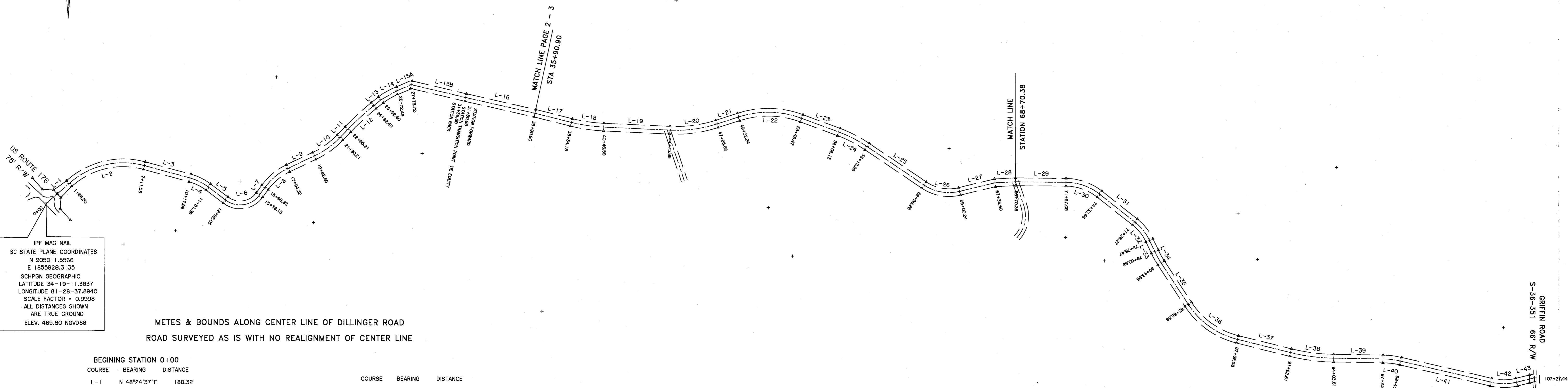


SC GRID NORTH



IPF MAG NAIL
SC STATE PLANE COORDINATES
N 905011.5966
E 1855928.3135
SCHPGN GEOGRAPHIC
LATITUDE 34-19-11.3837
LONGITUDE 81-28-37.8940
SCALE FACTOR + 0.9998
ALL DISTANCES SHOWN
ARE TRUE GROUND
ELEV. 465.60 NGVD88

METES & BOUNDS ALONG CENTER LINE OF DILLINGER ROAD
ROAD SURVEYED AS IS WITH NO REALIGNMENT OF CENTER LINE

BEGINNING STATION 0+00

COURSE BEARING DISTANCE

L-1 N 48°24'37"E 188.32'

RAD.: 527.38' TAN.: 285.41'
LEN.: 523.21' DELTA: 56°50'34"

L-2 N 76°48'41"E 502.02'

L-3 S 74°48'17"E 306.43'

RAD.: 354.26' TAN.: 67.52'
LEN.: 133.43' DELTA: 21°34'51"

L-4 S 63°51'07"E 132.65'

L-5 S 53°09'06"E 140.66'

RAD.: 154.90' TAN.: 157.69'
LEN.: 246.08' DELTA: 91°01'26"

L-6 N 81°20'12"E 221.01'

L-7 N 35°49'58"E 61.69'

RAD.: 387.92' TAN.: 99.34'
LEN.: 194.50' DELTA: 28°43'41"

L-8 N 50°13'41"E 192.47'

L-9 N 64°35'50"E 188.33'

RAD.: 570.75' TAN.: 104.94'
LEN.: 207.56' DELTA: 20°50'10"

L-10 N 54°11'29"E 206.42'

L-11 N 43°46'24"E 75.00'

RAD.: 1724.15' TAN.: 113.76'
LEN.: 227.19' DELTA: 7°32'59"

L-12 N 47°00'33"E 227.03'

L-13 N 50°47'03"E 60.00'

RAD.: 441.20' TAN.: 60.42'
LEN.: 120.09' DELTA: 15°35'44"

L-14 N 60°14'41"E 119.72'

L-15A N 66°41'50"E 101.23'

L-15B S 76°44'41"E 362.97'

L-16 S 77°17'10"E 459.95'

L-17 S 75°51'35"E 243.28'

RAD.: 1064.91' TAN.: 106.56'
LEN.: 212.41' DELTA: 11°25'42"

L-18 S 81°35'16"E 212.06'

L-19 S 87°17'46"E 429.28'

RAD.: 850.27' TAN.: 156.64'
LEN.: 309.80' DELTA: 20°52'34"

L-20 N 82°16'42"E 308.09'

L-21 N 71°50'25"E 146.61'

RAD.: 620.30' TAN.: 216.85'
LEN.: 417.23' DELTA: 38°32'19"

L-22 S 88°53'11"E 409.41'

L-23 S 69°37'52"E 256.66'

RAD.: 860.89' TAN.: 103.92'
LEN.: 206.83' DELTA: 13°45'57"

L-24 S 62°45'04"E 206.34'

L-25 S 55°50'59"E 446.30'

RAD.: 288.35' TAN.: 128.03'
LEN.: 240.98' DELTA: 47°52'58"

L-26 S 79°48'01"E 234.03'

L-27 N 78°19'08"E 235.36'

L-28 N 87°12'52"E 133.78'

L-29 S 89°22'23"E 326.71'

RAD.: 357.89' TAN.: 122.12'
LEN.: 235.37' DELTA: 37°40'55"

COURSE BEARING DISTANCE

L-29 S 89°22'23"E 326.71'

RAD.: 357.89' TAN.: 122.12'
LEN.: 235.37' DELTA: 37°40'55"

L-30 S 70°33'44"E 231.16'

L-31 S 51°42'28"E 293.81'

RAD.: 322.13' TAN.: 76.49'
LEN.: 150.20' DELTA: 26°42'56"

L-32 S 38°21'48"E 148.84'

L-33 S 24°59'47"E 84.21'

RAD.: 595.65' TAN.: 41.71'
LEN.: 83.28' DELTA: 8°00'40"

L-34 S 29°00'49"E 83.22'

L-35 S 33°00'42"E 322.62'

RAD.: 535.55' TAN.: 211.00'
LEN.: 402.00' DELTA: 43°00'27"

L-36 S 54°31'25"E 392.63'

L-37 S 76°01'49"E 354.03'

RAD.: 1240.00' TAN.: 141.11'
LEN.: 281.00' DELTA: 12°59'03"

L-38 S 82°31'21"E 280.40'

L-39 S 89°00'53"E 320.37'

RAD.: 550.00' TAN.: 58.41'
LEN.: 116.38' DELTA: 12°07'27"

L-40 S 82°57'09"E 116.17'

L-41 S 76°53'26"E 599.92'

RAD.: 364.07' TAN.: 85.91'
LEN.: 168.73' DELTA: 26°33'16"

L-42 N 89°49'53"E 167.23'

L-43 N 76°33'12"E 118.42'

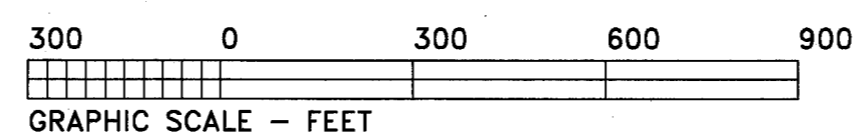
ENDING STATION 107+27.44

DILLINGER ROAD
RIGHT OF WAY ACQUISITION SURVEY
50' RIGHT OF WAY TOTAL
25' EACH SIDE OF EXISTING CENTER LINE
SURVEY FOR NEWBERRY COUNTY
SURVEYED NOVEMBER 30 THRU DECEMBER 7, 2009
REVISED MAY 13, 2010

PROJECT NO. 091130R1

IPF RR SPIKE
SC STATE PLANE COORDINATES
N 903876.8654
E 1865565.4755
SCHPGN GEOGRAPHIC
LATITUDE 34-19-00.58358
LONGITUDE 81-26-42.92484
SCALE FACTOR + 0.9998
ALL DISTANCES SHOWN
ARE TRUE GROUND
ELEV. 440.75 NGVD88

NOTE:
REVISED MAY 13, 2010 TO SHOW CENTER LINE ADDENDUM
STA 25+52.40 TO STA 31+36.69

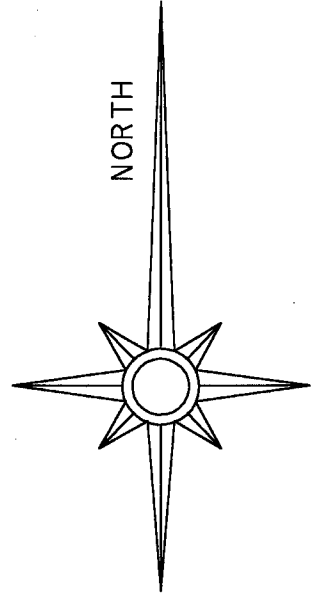


"I hereby state that to the best of my knowledge, information, and belief, the survey shown hereon was made in accordance with the Minimum Standards Manual for the Practice of Land Surveying in South Carolina, and meets or exceeds the requirements for a Class A survey as specified therein; also there are no visible encroachments or projections other than shown."

C.A. Shealy, III

C.A. SHEALY, III
SCRLS 15182
PO BOX 248
PROSPERITY, S.C. 29127
(803)276-8886

SHEET NO.
1
of
4



SC GRID NORTH

METES & BOUNDS ALONG CENTER LINE OF EXISTING ROAD

COURSE	BEARING	DISTANCE
L-1	N 48°24'37"E	188.32'
RAD.: 527.38' TAN.: 285.41' LEN.: 523.21' DELTA: 56°50'34"		
L-2	N 76°48'41"E	502.02'
L-3	S 74°48'17"E	306.43'
RAD.: 354.26' TAN.: 67.52' LEN.: 133.43' DELTA: 21°34'51"		
L-4	S 63°51'07"E	132.65'
L-5	S 53°09'06"E	140.66'
RAD.: 154.80' TAN.: 157.69' LEN.: 246.08' DELTA: 91°01'26"		
L-6	N 81°20'12"E	221.01'
L-7	N 35°49'58"E	61.69'
RAD.: 387.92' TAN.: 99.34' LEN.: 194.50' DELTA: 28°43'41"		
L-8	N 50°13'41"E	192.47'
L-9	N 64°35'50"E	188.33'
RAD.: 570.75' TAN.: 104.94' LEN.: 207.56' DELTA: 20°50'10"		
L-10	N 54°11'29"E	206.42'
L-11	N 43°46'24"E	75.00'
RAD.: 1724.15' TAN.: 113.76' LEN.: 227.19' DELTA: 7°32'59"		
L-12	N 47°00'33"E	227.03'
L-13	N 50°47'03"E	60.00'
RAD.: 441.20' TAN.: 60.42' LEN.: 120.09' DELTA: 19°35'44"		
L-14	N 60°14'41"E	119.72'
L-15A	N 66°41'50"E	101.23'
L-15B	S 76°44'41"E	362.97'
L-16	S 77°17'10"E	459.95'

TMH 563-44
N/F DONALD V. KUNKLE
& FAYE W. KUNKLE
REF. D.B. 144 PG. 202
P.B. AI PG. 155
0.27 OF AN ACRE IN NEW R/W
FROM STA. 0+87.5 TO 5+54.20

TMH 563-49
N/F OLIN H. LOMINICK, JR.
REF. D.B. 298 PG. 7
P.B. AP VOL. 2 PG. 204
1.16 ACRES IN NEW R/W
FROM STA. 5+54.20 TO 25+72.28

TMH 563-15 & TMH 563-15-1
N/F SATTERFIELD-DOUGLAS PROPERTIES
REF. R.B. 1352 PG. 165 & 167
PLAT CAB. C SLIDE 179 PG. 1
1.48 ACRES IN NEW R/W
FROM STA. 0+87.5 TO 26+72.4

TMH 564-7
N/F JAMES PATRICK MEETZE
REF. D.B. 250 PG. 9
P.B. AJ VOL. 2 PG. 200
D.B. 301 PG. 189
P.B. I PG. 57
0.20 ACRES IN NEW R/W
FROM STA. 25+72.28 TO 29+22.55

ADDENDUM TO CENTER LINE
5-13-2010
FROM STA 25+52.40 TO 31+36.69

TMH 564-5
LIVINGSTON CEMETERY
REF. P.B. O PG. 152
P.B. AH VOL. 2 PG. 192
0.06 OF AN ACRE IN NEW R/W
FROM STA. 29+22.55 TO STA. 30+17.58

TMH 564-3
N/F KIMBERLY MEETZE MORRIS
REF. R.B. 1425 PG. 84
P.B. O PG. 152
0.85 OF AN ACRE IN R/W
FROM STA 30+08.76 TO 44+97.51
(30+17.58 STATION BACK)

TMH 564-6
N/F JAMES PATRICK MEETZE
REF. D.B. 225 PG. 124
P.B. AG VOL. 2 PG. 43
0.26 OF AN ACRE IN NEW R/W
FROM STA. 26+72.40 TO 31+36.69 STA. BACK

TMH 564-2
N/F MELVIN E. MEETZE
REF. D.B. 225 PG. 128
P.B. AG VOL. 2 PG. 43
0.26 OF AN ACRE IN R/W
FROM STA. 31+30.95 TO 35+90.90

BEGIN NEW 50' R/W
AT STATION 0+87.5
25' EACH SIDE OF CENTER LINE

SC STATE PLANE COORDINATES
N 909011.55
E 1855928.31
SCHPGN GEOGRAPHIC
LATITUDE 34-19-11.3837
LONGITUDE 81-28-37.8940
SCALE FACTOR = 0.9998
ALL DISTANCES SHOWN
ARE TRUE GROUND
ELEV. 465.60 NGVD88

RIGHT OF WAY ALREADY OBTAINED BY SCDOT
DOCKET 36.223 ROUTE 176 SHEET #17
37.5' EACH SIDE CENTER ALONG ROUTE 176
33' EACH SIDE CENTER ALONG DILLINGER ROAD
TO STATION 0+87.5 / ALSO 50' SITE TRIANGLE
EACH SIDE OF DILLINGER

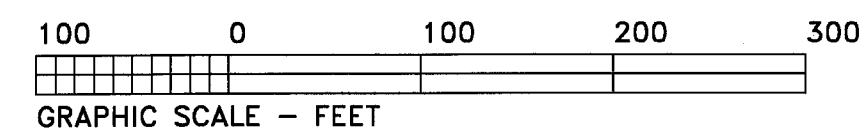
DILLINGER ROAD
50' RIGHT OF WAY ACQUISITION SURVEY
FOR NEWBERRY COUNTY
STATION 0+00 THRU STATION 35+90.90
SURVEYED NOVEMBER 30 THRU DECEMBER 7, 2009
REVISED MAY 13, 2010

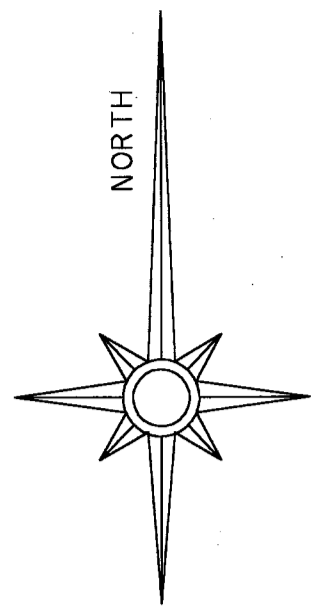
PROJECT NO. 091130AR1

"I hereby state that to the best of my knowledge, information, and belief, the survey shown hereon was made in accordance with the Minimum Standards Manual for the Practice of Land Surveying in South Carolina, and meets or exceeds the requirements for a Class A survey as specified therein; also there are no visible encroachments or projections other than shown."

C.A. Shealy, III

C.A. SHEALY, III
SCRLS 15182
PO BOX 248
PROSPERITY, S.C. 29127
(803)278-8886





SC GRID NORTH

TMH 564-3
N/F KIMBERLY MEETZE MORRIS
REF. R.B. 1425 PG. 84
P.B. O PG. 152
0.85 OF AN ACRE IN R/W
FROM STA. 30+08.76 TO 44+97.51

TMH 564-12
N/F JOHN CLARKE DEHART
REF. R.B. 1123 PG. 143
PLAT CAB. C SLIDE 135 PG. 3
0.54 OF AN ACRE IN ROAD R/W
FROM STA. 44+97.51 TO 54+39.54

TMH 564-22
N/F MICHAEL A. HUDNALL
REF. R.B. 1137 PG. 133
PLAT CAB. C SLIDE 144 PG. 1
0.26 OF AN ACRE IN ROAD R/W
FROM STA. 54+39.54 TO 58+88.01

TMH 564-13
N/F PALMETTO PROPERTIES INVESTMENTS
REF. R.B. 1261 PG. 26
PLAT CAB. C SLIDE 138 PG. 10
0.30 OF AN ACRE IN ROAD R/W

TMH 621-10
N/F JAMES PATRICK MEETZE
& MELVIN EUGENE MEETZE
REF. D.B. 561 PG. 338 ; D.B. 562 PG. 37
P.B. AR PG. 67 ; R.B. 1148 PG. 316
PLAT CAB. C SLIDE 147 PG. 9
0.64 OF AN ACRE IN R/W
FROM STA. 64+17.55 TO 75+27.59

TMH 564-21
N/F JOHN E. FRAMPTON, JR.
& LORI M. FRAMPTON
REF. R.B. 1378 PG. 327
PLAT CAB. C SLIDE 143 PG. 9
0.25 OF AN ACRE IN R/W
FROM STA. 35+90.90 TO 40+20.77

TMH 564-20
N/F ROBERT W. & SHARON Y. GOLDEN
REF. R.B. 1294 PG. 307
PLAT CAB. C SLIDE 143 PG. 7
0.25 OF AN ACRE IN R/W
FROM STA. 40+20.77 TO 44+59.09

TMH 564-16
N/F PAUL C. CARTER
REF. R.B. 1351 PG. 135
PLAT CAB. C SLIDE 141 PG. 9
0.23 OF AN ACRE IN R/W
FROM STA. 44+59.09 TO 48+59.94

TMH 564-15
N/F STEWART OSEMAN
REF. R.B. 1129 PG. 7
PLAT CAB. C SLIDE 141 PG. 1
0.19 OF AN ACRE IN R/W
FROM STA. 48+59.94 TO 51+98.22

TMH 564-25
N/F WALTER W. REDNER
& J. YOLENDA REDNER
REF. R.B. 1162 PG. 187
PLAT CAB. C SLIDE 144 PG. 10
0.37 OF AN ACRE IN R/W
FROM 51+98.22 TO 58+38.01

TMH 564-23
N/F DWAYNE & MERI CLARK
REF. R.B. 1137 PG. 198
PLAT CAB. C SLIDE 144 PG. 3
0.30 OF AN ACRE IN ROAD R/W
FROM STA. 58+38.01 TO 63+64.16

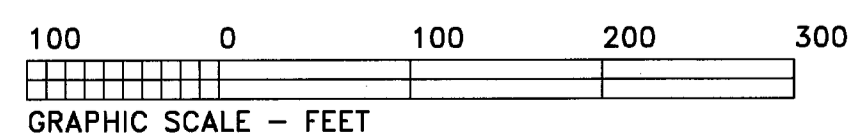
TMH 564-18
N/F DANIEL O. WICKER
& MIRANDA WICKER
REF. R.B. 1134 PG. 220
PLAT CAB. C SLIDE 142 PG. 7
0.29 OF AN ACRE IN ROAD R/W
FROM STA. 63+64.16 TO 68+70.38

METES & BOUNDS ALONG CENTER LINE

STATION	COURSE	BEARING	DISTANCE
STATION 35+90.90 →	L-16	S 77°17'10"E	459.95'
	L-17	S 75°51'35"E	243.28'
RAD.: 1064.91' TAN.: 106.56' LEN.: 212.41' DELTA: 11°25'42"			
	L-18	S 81°35'16"E	212.06'
	L-19	S 87°17'46"E	429.28'
RAD.: 850.27' TAN.: 156.64' LEN.: 309.80' DELTA: 20°52'34"			
	L-20	N 82°16'42"E	308.09'
	L-21	N 71°50'25"E	146.61'
RAD.: 620.30' TAN.: 216.85' LEN.: 417.23' DELTA: 38°32'19"			
	L-22	S 88°53'11"E	409.41'
	L-23	S 69°37'52"E	256.66'
RAD.: 860.89' TAN.: 103.92' LEN.: 206.83' DELTA: 13°45'57"			
	L-24	S 62°45'04"E	206.34'
	L-25	S 55°50'59"E	446.30'
RAD.: 288.35' TAN.: 128.03' LEN.: 240.98' DELTA: 47°52'58"			
ENDING STATION 68+70.38 →	L-26	S 79°48'01"E	234.03'
	L-27	N 76°15'08"E	236.36'
	L-28	N 87°12'52"E	133.78'
	L-29	S 89°22'23"E	326.71'

DILLINGER ROAD
50' RIGHT OF WAY ACQUISITION SURVEY
FOR NEWBERRY COUNTY
STATION 35+90.90 TO STATION 68+70.38
SURVEYED NOVEMBER 30 THRU DECEMBER 7, 2009

PROJECT NO. 091130



"I hereby state that to the best of my knowledge, information, and belief, the survey shown hereon was made in accordance with the Minimum Standards Manual for the Practice of Land Surveying in South Carolina, and meets or exceeds the requirements for a Class A survey as specified therein; also there are no visible encroachments or projections other than shown."

C.A. Shealy, III

C.A. SHEALY, III
SCRLS 15182
PO BOX 248
PROSPERITY, S.C. 29127
(803)276-8686

5-14-10

MATCH LINE
STATION 68+70.38

TMH 621-10
N/F JAMES PATRICK MEETZE & MELVIN EUGENE MEETZE
REF. D.B. 561 PG. 338 ; D.B. 562 PG. 37
P.B. AR PG. 67 ; R.B. 1148 PG. 316
PLAT CAB. C SLIDE 147 PG. 9
0.64 OF AN ACRE IN R/W
FROM STA. 64+17.55 TO 75+27.59

NEW 25' R/W
L-28
L-29

TMH 623-22
N/F GINA WESSINGER & CHARLENE WEATHERFORD
REF. R.B. 1121 PG. 77
PLAT CAB. C SLIDE 137 PG. 6
0.49 OF AN ACRE IN R/W
FROM STA. 68+70.38 TO 77+26.29

TMH 623-23
N/F STEVEN W. LONG
REF. R.B. 1407 PG. 107
PLAT CAB. C SLIDE 143 PG. 2
0.85 OF AN ACRE IN R/W
FROM STA. 75+27.59 TO 90+17.28

TMH 623-24
N/F TRAVIS FULMER
REF. R.B. 1361 PG. 280
0.14 OF AN ACRE IN R/W
FROM STA. 90+17.28 TO 92+68.30

TMH 623-25
N/F MICHAEL KYLE WARE
REF. R.B. 1450 PG. 21
PLAT CAB. C SLIDE 223 PG. 6
0.29 OF AN ACRE IN R/W
FROM STA. 92+68.30 TO 97+82.92

TMH 623-21
N/F CHARLES L. WESSINGER
REF. R.B. 1121 PG. 72
PLAT CAB. C SLIDE 137 PG. 7
0.72 OF AN ACRE IN R/W
FROM STA. 77+26.29 TO 89+85.81

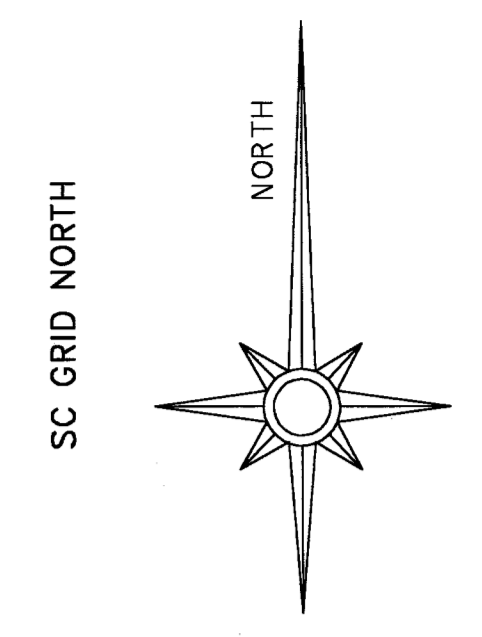
TMH 623-8
N/F MICHAEL H. WARE & BARBARA G. WARE
REF. D.B. 141 PG. 151
P.B. AP PG. 79
0.54 OF AN ACRE IN R/W
FROM STA. 97+82.92 TO 107+27.44

TMH 623-1
N/F HENRY H. LIVINGSTON, III
REF. D.B. 484 PG. 241
PLAT CAB. B SLIDE 18 PG. 3
R.B. 1131 PG. 186
PLAT CAB. C SLIDE 141 PG. 10
0.51 OF AN ACRE IN R/W
FROM STA. 89+85.81 TO 98+81.56

TMH 623-15
N/F MARY N. KINARD
REF. D.B. 398 PG. 222
PLAT CAB. B SLIDE 18 PG. 3
0.48 OF AN ACRE IN R/W
FROM STA. 98+81.56 TO 107+27.44

DILLINGER ROAD
50' RIGHT OF WAY ACQUISITION SURVEY
FROM STATION 68+70.38 TO ENDING STATION 107+27.44
FOR NEWBERRY COUNTY
SURVEYED NOVEMBER 30 THRU DECEMBER 7, 2009

PROJECT NO. 091130



METES & BOUNDS ALONG CENTER LINE

COURSE	BEARING	DISTANCE
L-28	N 87°12'52"E	133.78'
L-29	S 89°22'23"E	326.71'
RAD.: 357.89' TAN.: 122.12'		
LEN.: 235.37' DELTA: 37°40'55"		
L-30	S 70°33'44"E	231.16'
L-31	S 51°42'28"E	293.81'
RAD.: 322.13' TAN.: 76.49'		
LEN.: 150.20' DELTA: 26°42'56"		
L-32	S 38°21'48"E	148.84'
L-33	S 24°59'47"E	84.21'
RAD.: 595.65' TAN.: 41.71'		
LEN.: 83.28' DELTA: 8°00'40"		
L-34	S 29°00'49"E	83.22'
L-35	S 33°00'42"E	322.92'
RAD.: 535.55' TAN.: 211.00'		
LEN.: 402.00' DELTA: 43°00'27"		
L-36	S 54°31'25"E	392.63'
L-37	S 76°01'49"E	354.03'
RAD.: 1240.00' TAN.: 141.11'		
LEN.: 281.00' DELTA: 12°59'03"		
L-38	S 82°31'21"E	280.40'
L-39	S 89°00'53"E	320.37'
RAD.: 590.00' TAN.: 58.41'		
LEN.: 116.38' DELTA: 12°07'27"		
L-40	S 82°57'09"E	116.17'
L-41	S 76°53'26"E	598.92'
RAD.: 364.07' TAN.: 85.91'		
LEN.: 168.73' DELTA: 26°33'16"		
L-42	N 89°49'53"E	167.23'
L-43	N 76°53'12"E	118.42'

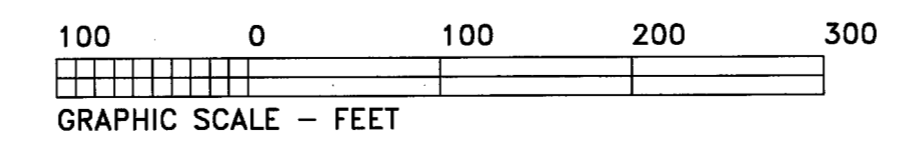
ENDING STATION 107+27.44

SC STATE PLANE COORDINATES
N 903876.8654
E 1865565.4755
SCHPGN GEOGRAPHIC
LATITUDE 34-19-00.58358
LONGITUDE 81-26-42.92484
SCALE FACTOR = 0.9998
ALL DISTANCES SHOWN
ARE TRUE GROUND
ELEV. 440.75 NGVD88

"I hereby state that to the best of my knowledge, information, and belief, the survey shown hereon was made in accordance with the Minimum Standards Manual for the Practice of Land Surveying in South Carolina, and meets or exceeds the requirements for a Class A survey as specified therein; also there are no visible encroachments or projections other than shown."

C.A. Shealy, III

C.A. SHEALY, III
SCRLS 15182
PO BOX 248
PROSPERITY, S.C. 29127
(803)276-8686



5-14-10